



CASE STUDY:

Metered Film Delivery[®] cuts waste and boosts savings in food & beverage

Waste happens. We prevent the unnecessary.



Lantech was always there, responding in a timely manner to our requests and helping achieve our goals by coming up with innovative solutions."

– Packaging Engineer, prominent bottled water company

DID YOU KNOW
that reducing film usage by
just 2.5 oz per load can
**save over
\$50k per year**



Who

A food and beverage company was wrapping over 350,000 loads per year with a conventional film delivery system.



Problem

With the conventional film delivery system, rolls of film were often replaced before being entirely used. Additionally, film was unevenly distributed during the wrap cycle, causing inconsistent containment force at the top, middle and bottom of the load.



Solution

Metered Film Delivery® – with patented algorithms that provide precision film application and faster response time, making it possible to deliver double the wrap force per revolution of film. After implementing Lantech's Metered Film Delivery, rolls of film were being used to the core and film was evenly distributed during the wrap cycle, delivering more consistent containment force at the top, middle and bottom.

RESULTS: 25% reduction in film usage

while achieving higher load containment



Benefits

With Lantech's LeanWrap® technologies, the company was able to see multiple benefits:

- **Double the wrap force** – Metered Film Delivery provides more containment force using the same amount of film and wraps loads tighter, while using less film
- **Reduction in film breaks** – When film breaks are reduced by the Metered Film Delivery system, it requires fewer adjustments by the operator and improves the containment force, quality of the wrapped load, and uptime
- **No crushing or twisting of the load** – Metered Film Delivery allows the company to easily wrap loads that were once difficult or impossible to wrap well (ex: paper towels, order picked loads).



Results

This food and beverage company was able to achieve higher levels of containment force while reducing their film consumption by 25% (2.5 oz per load) with Lantech's Metered Film Delivery System. This film reduction resulted in a savings of \$54,750 annually.



[Click here to view the customer story for this case study](#)



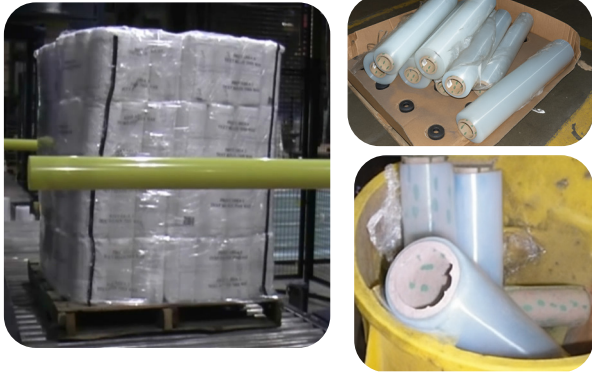
Ready to increase throughput and optimize operations?

[Click Here](#) to start the conversation with our Pro Team!

Don't use old technology to do today's job.

Using Conventional Film Delivery System:

- Rolls of film often replaced before being entirely used.
- Film was unevenly distributed during the wrap cycle, causing inconsistent containment force at the top, middle and bottom of the load.



Using Lantech's Metered Film Delivery System:

- Rolls of film are now used to the core.
- Film is evenly distributed during the wrap cycle, delivering more consistent containment force at the top, middle and bottom of the load.
- Achieved higher levels of containment force while reducing film consumption by 2.5 oz per load (25% reduction)



To understand this company's cost savings, we calculated how many loads needed to be wrapped per year, then multiplied that number by the 2.5 oz. of film saved per load.



- Loads per hour 40
- Hours per day 24
- Days per year 365



- Annual Loads Wrapped 350,400
- Reduction of Film (with MFD) 2.5 oz
- Film cost per Pound \$1.00

Inputs

Calculations



- 350,400 loads per year x 2.5 oz = 876,000 oz
- 876,000 oz / 16 = 54,750 lbs of film saved
- 54,750 lbs of film x \$1 per lb = \$54,750



www.lantech.com

About Us

In 1972 Lantech made an impact on the world by inventing the stretch wrapper and changing the way companies package and protect their products for shipment. Now, billions of pallet loads are stretch wrapped every year. Today we build a full line of case and tray handling, stretch wrapping, and pallet conveying equipment, with manufacturing facilities in the United States and the Netherlands, and sales and technical support worldwide. Over the years our business has been built on innovation, customer support and the mission to dramatically reduce shipping damage globally.

For more information on our automation solutions, visit www.lantech.com or click one of the links below.

**STRETCH
WRAPPERS**

**CASE & TRAY
HANDLING**

**TALK TO OUR
PRO TEAM**

Contact Us. Choose a Lantech office:



North America

Louisville, KY USA • +1 502 815 9108

Australia

Hallam, VIC AU • +61 1300 526 832

Europe

Malden, NL • +31 (0) 485 751 760

China

Shanghai, CN • +86 40 0877 1972