

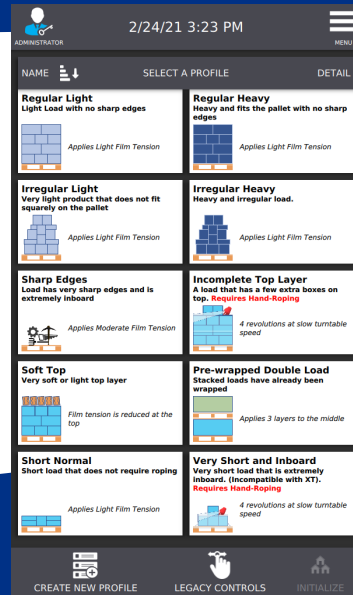
Introducing Load Guardian 2.3.1, featuring

READY TO WRAP PROFILES

Operators simply match one of the prebuilt, Ready to Wrap Profiles to their load and push start, eliminating the guess work for stretch wrapping almost any load configuration.

Additional New Features

- Expanded capabilities for:
 - Short Loads
 - Reverse Rotation
 - Wrap Heights





Introducing the NEW QL-400XT

Semi-Automatic Stretch Wrapper

Work Smarter ... Keep Your Driver on the Forklift

Patented XT Cut and Clamp®

Automatically captures the stretch film and cuts it at the end of the wrap cycle.

- **Fully Mechanical**
Requires no air or hot wire.
- **Save two minutes per load**
Keep your driver on the forklift and eliminate the on and off to cut and attach film.



PROTECTED BY
Load Guardian™
Creates, Maintains & Delivers
Safe-to-Ship Loads

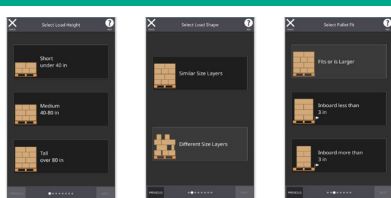


QL-400XT

Load Guardian™ is Lantech's patented control system that *creates, maintains* and *delivers* the right containment force for safe-to-ship loads every time. It minimizes operator interaction and eliminates the guess work for stretch wrapping any load configuration.



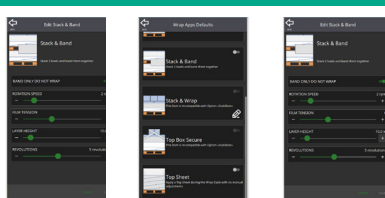
Intelligent Set-up



Intuitively guides users through the profile creation process, using recognizable icons and smartphone-like simplicity, to calculate the right containment force.



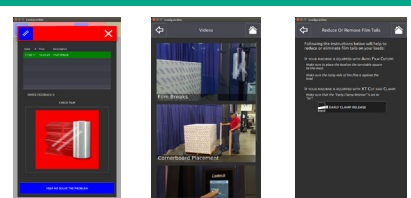
Wrap Apps



Eliminates the need for operators to make machine adjustments for common load applications (e.g. stack & band, stack & wrap, labels, corner boards, top sheet, top box, short loads) through pre-established, yet customizable wrap profile settings.



Help



Provides simple video and text instruction for countering stretch wrapping problems: film breaks, product crushing, loads twisting, and more.



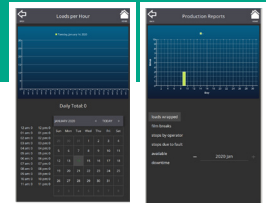
Robustness

Hundreds of machine improvements based on 25 years of Q machine warranty experience. Wire connections, motors, reducers, and sensors are improved. Plus new controls.



Production Reports

Simple diagnostics and fault tracking that make problem areas visible.



Specifications

Performance

Peak Production Speed	Up to 30-40 loads/hr
Turntable Speed (Variable)	12 RPM
Turntable Drive	1 HP TEFC

Load Handling

Turntable Size	1.650mm (65" Diameter)
Maximum Load Diagonal / Dimensions	1.823 mm (72")
Maximum Load Height	2.030mm mm (2 3/4")
Maximum Load Weight	2.268 kg (5000 lbs)

Film Delivery System

Film Delivery System	Power Roller-Stretch PLUS
Standard Pre-Stretch	250%
E-Z Thread Roll Carriage	Standard
Wrapping Force	Variable (Electric)
Film Capacity	250 mm Diameter (Length 10" Diameter - 20" Length)
Standard Film Width	500 mm Width Optional (30" W Optional)
Laser Height Sensor	Standard
Auto Film Cut-off	Standard
Pallet Grip®	Standard

Service Requirements

Electric	220 Volt-16 Amp-50 Hz
Pneumatic	N/A
NEMA Type 1 Enclosure	Standard
Wrap Cycle Pause	Standard
One Way Wrap	Standard
Service Support	24 Hrs/7 Days a week
Phone Number	+31 (0)485 751 700

Warranty	3 years, unlimited cycles
----------	---------------------------

QL-400XT Standard Performance Package

- **Pallet Grip®**
Keeps your loads from sliding off pallets during shipment.
- **Patented XT Cut and Clamp®**
Automatically captures the stretch film and cuts it at the end of the wrap cycle.
- **Power Roller Stretch Plus™**
Maximizes film delivery system performance.
- **NEMA Type 1 Enclosure**
Protects control system electronics from dust, dirt and moisture.
- **2.268KG (5,000 LBS) Weight Capacity and 1 HP Turntable Drive Motor.**
- **No Scheduled Preventative Maintenance.**

Options

EZ Weigh® Integrated Scale

Weigh and Wrap in One Easy Step!



Upgrade

Click-n-Go™

Stretch wrapping loads at the touch of a button!

Eliminates requirement to install a ceiling-mounted lanyard.

Each unit can handle up to 3 machines with 5 load profiles per machine.

