

- > PALLET GRIP®
- > AUTO FILM CUT-OFF (QL400)
- > XT CUT AND CLAMP (QL400XT)
- > LOAD GUARDIAN
- > POWER ROLLER STRETCH PLUS
- > Also included as standard:
  - > NEMA 1 Enclosure
  - > 5000lb Turntable Capacity
  - > Class 1 Load Height Sensors
  - > and many more



**QL400XT**



**SLA**

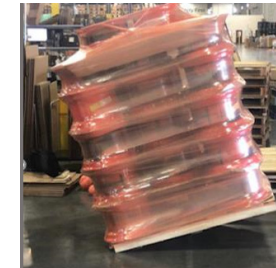
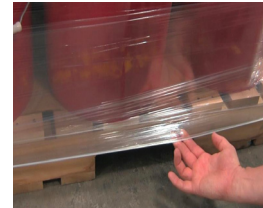
## Ready to Wrap Profiles



Operators simply match one of the prebuilt, Ready to Wrap Profiles to their load and push start, eliminating the guess work for stretch wrapping almost any load configuration.

<b>Regular Light</b> Light load with no sharp edges Applies Light Film Tension	<b>Regular Heavy</b> Heavy and flat the pallet with no sharp edges Applies Moderate Film Tension
<b>Irregular Light</b> Very light product that does not fit evenly on the pallet Applies Light Film Tension	<b>Irregular Heavy</b> Heavy and irregular load. Applies Moderate Film Tension
<b>Sharp Edges</b> Load has very sharp edges and is extremely inboard Applies Light Film Tension	<b>Incomplete Top Layer</b> A load that has a few extra boxes on top. Requires Hand-Rapping 4 revolutions at slow turntable speed
<b>Soft Top</b> Very soft or light top layer Film tension is reduced at the top	<b>Pre-wrapped Double Load</b> Standard loads have already been wrapped Applies 2 layers to the middle
<b>Short Normal</b> Short load that does not require rapping Applies Moderate Film Tension	<b>Very Short and Inboard</b> Very short load that is extremely inboard. Incompatible with XT Requires Hand-Rapping 4 revolutions at slow turntable speed

## Pallet Grip® Lock Your Load to the Pallet!



### Why Take Unnecessary Risk?

- > Millions of loads slide off their pallets during shipment each year causing billions of dollars of rework and waste.
- > If your load isn't properly bonded or "locked" to its pallet, it can slide off and be damaged during transit.
- > Click or scan QR code to learn more....

## Lantech Intelligent Network Connection

Actionable Analytics — Anytime, Anywhere.



**PALLET GRIP**  
See how Pallet Grip can protect your products and lower your costs



**LINC VIDEO**  
Learn more about LINC- Lantech's Intelligent Network Connection.. Now available on L-Series automatics



**VISIT WEBSITE**  
Learn more about Lantech and the products we manufacture

## Why Square is Important

Square cases pack better, stack better, and protect better. They provide the structural integrity to deliver the performance their designer intended.

**FACT:** Cases lose 30% of their stacking strength if their sides and corners are not aligned.

There are barriers to erecting square cases and trays. Thinner corrugated, temperature and humidity changes, and variations in blanks can cause them to be “unsquared” or lead to machine jams.



Lantech Case Erectors, Tray Formers and Sealers overcome these barriers through precise case management and 100% control of the corrugated throughout the entire erecting and sealing processes, ensuring your cases and trays perform as designed and produced with maximum efficiency.

## Multi Format



## C1000/C2000



## TE A Tray Erector



## High Speed Random Sealer



Click or scan

### MULTIFORMAT

Watch our multi-format case erector run.



Click or scan

### MORE CASE

Watch a video montage of our case capabilities



Click or scan

### CASE SIZE INFO

Enter your case sizes to see which case erector is the best fit for you.