



## QL400XT with optional EZ Weigh Scale

### Features

- › PALLET GRIP®
- › AUTO FILM CUT-OFF (QL400)
- › XT CUT AND CLAMP (QL400XT)
- › LOAD GUARDIAN
- › POWER ROLLER STRETCH PLUS
- › Also included as standard:
  - › NEMA 1 Enclosure
  - › 5000lb Turntable Capacity
  - › Class 1 Load Height Sensors
  - › and many more









**QL400**

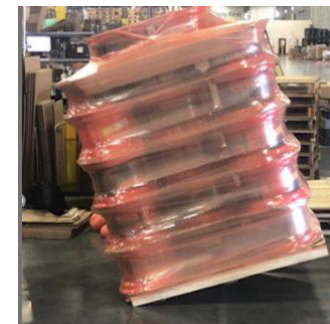
## Ready to Wrap Profiles



Operators simply match one of the prebuilt, Ready to Wrap Profiles to their load and push start, eliminating the guess work for stretch wrapping almost any load configuration.

<b>Regular Light</b> Light Load with no sharp edges  Applies Light Film Tension	<b>Regular Heavy</b> Heavy and fits the pallet with no sharp edges  Applies Moderate Film Tension
<b>Irregular Light</b> Very light product that does not fit squarely on the pallet  Applies Light Film Tension	<b>Irregular Heavy</b> Heavy and irregular load.  Applies Moderate Film Tension
<b>Sharp Edges</b> Load has very sharp edges and is extremely inboard  Applies Light Film Tension	<b>Incomplete Top Layer</b> A load that has a few extra boxes on top. Requires Hand-Roping  4 revolutions at slow turntable speed
<b>Soft Top</b> Very soft or light top layer  Film tension is reduced at the top	<b>Pre-wrapped Double Load</b> Stacked loads have already been wrapped  Applies 3 layers to the middle
<b>Short Normal</b> Short load that does not require roping  Applies Moderate Film Tension	<b>Very Short and Inboard</b> Very short load that is extremely inboard. (Incompatible with XT). Requires Hand-Roping  4 revolutions at slow turntable speed

## Pallet Grip® Lock Your Load to the Pallet!



### Why Take Unnecessary Risk?

- › Millions of loads slide off their pallets during shipment each year causing billions of dollars of rework and waste.
- › If your load isn't properly bonded or "locked" to its pallet, it can slide off and be damaged during transit.
- › Click or scan QR code to learn more....



#### PALLET GRIP

See how Pallet Grip can protect your products and lower your costs



#### SIDE BY SIDE

Watch how the QL400XT can reduce your labor cost and improve your productivity



#### VISIT WEBSITE

Learn more about Lantech and the products we manufacture

### Why Square is Important

Square cases pack better, stack better, and protect better. They provide the structural integrity to deliver the performance their designer intended.

**FACT:** Cases lose 30% of their stacking strength if their sides and corners are not aligned.

There are barriers to erecting square cases and trays. Thinner corrugated, temperature and humidity changes, and variations in blanks can cause them to be “unsquared” or lead to machine jams.



Lantech Case Erectors, Tray Formers and Sealers overcome these barriers through precise case management and 100% control of the corrugated throughout the entire erecting and sealing processes, ensuring your cases and trays perform as designed and produced with maximum efficiency.

### Multi Format



### C1000/C2000



### TE A Tray Erector



### High Speed Random Sealer



#### MULTIFORMAT

Watch our multi-format case erector run.



#### MORE CASE

Watch a video montage of our case capabilities



#### CASE SIZE INFO

Enter your case sizes to see which case erector is the best fit for you.