

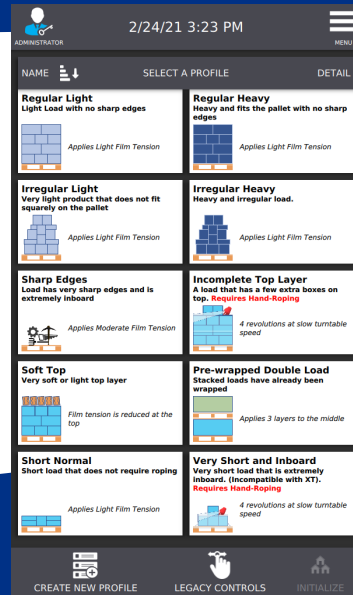
Introducing Load Guardian 2.3.1, featuring

READY TO WRAP PROFILES

Operators simply match one of the prebuilt, Ready to Wrap Profiles to their load and push start, eliminating the guess work for stretch wrapping almost any load configuration.

Additional New Features

- Expanded capabilities for:
 - Short Loads
 - Reverse Rotation
 - Wrap Heights



Lantech®

Introducing the NEW QL-400

Semi-Automatic Stretch Wrapper



PROTECTED BY
Load Guardian
*Creates, Maintains & Delivers
Safe-to-Ship Loads*

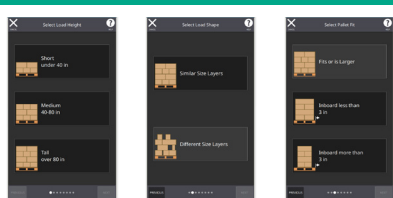


QL-400

Load Guardian is Lantech's patented control system that *creates, maintains* and *delivers* the right containment force for safe-to-ship loads every time. It minimizes operator interaction and eliminates the guess work for stretch wrapping any load configuration.



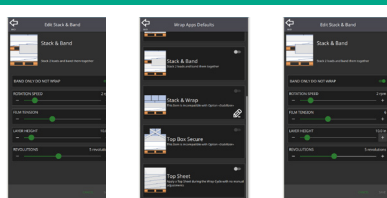
Intelligent Set-up



Intuitively guides users through the profile creation process, using recognizable icons and smartphone-like simplicity, to calculate the right containment force.



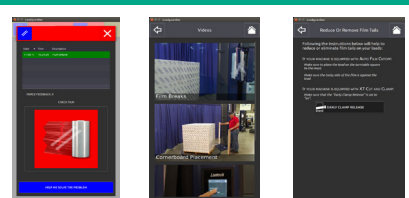
Wrap Apps



Eliminates the need for operators to make machine adjustments for common load applications (e.g. stack & band, stack & wrap, labels, corner boards, top sheet, top box, short loads) through pre-established, yet customizable wrap profile settings.



Help



Provides simple video and text instruction for countering stretch wrapping problems: film breaks, product crushing, loads twisting, and more.



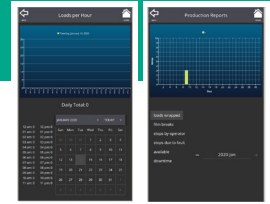
Robustness

Hundreds of machine improvements based on 25 years of Q machine warranty experience. Wire connections, motors, reducers, and sensors are improved. Plus new controls.



Production Reports

Advanced diagnostics, productivity charts and fault tracking.



Specifications

Performance

Peak Production Speed	Up to 25-35 loads/hr
Turntable Speed (Variable)	12 RPM
Turntable Drive	1 HP TEFC

Load Handling

Turntable Size	1.650 mm 65" Diameter
Maximum Load Diagonal / Dimensions	1.830 mm (72")
Maximum Load Height	70 mm (2 3/4")
Maximum Load Weight	2.268 kg (5000 lbs.)

Film Delivery System

Film Delivery System	Power Roller-Stretch PLUS
Standard Pre-Stretch	250%
E-Z Thread Roll Carriage	Standard
Wrapping Force	Variable (Electric)
Film Capacity	250 mm Diameter (10" Diameter - 20" Length)
Standard Film Width	500 mm Width Optional (30" Width Opt)
Laser Height Sensor	Standard
Auto Film Cut-off	Standard
Pallet Grip®	Standard

Service Requirements

Electric	120 Volt 20Amp-
Pneumatic	N/A
NEMA Type 1 Enclosure	Standard
Wrap Cycle Pause	Standard
One Way Wrap	Standard
Service Support	24 Hrs/7 Days a week
Phone Number	(800) 866-0322
Warranty	5 years, unlimited cycles

QL-400 Standard Performance Package

• Pallet Grip®

Keeps your loads from sliding off pallets during shipment.

• Auto Film Cut-off™

Saves 30 seconds of operator labor per load.

• Power Roller Stretch Plus™

Maximizes film delivery system performance.

• NEMA Type 1 Enclosure

Protects control system electronics from dust, dirt or moisture.

• 2.268KG (5,000 LBS) Weight Capacity and 1 HP Turntable Drive Motor.

• No Scheduled Preventative Maintenance.

Options

EZ Weigh® Integrated Scale

Weigh and Wrap in One Easy Step!



Upgrade

UPGRADE to a QL-400XT

*Increase Productivity.
Keep Your Driver
on the Forklift!*

